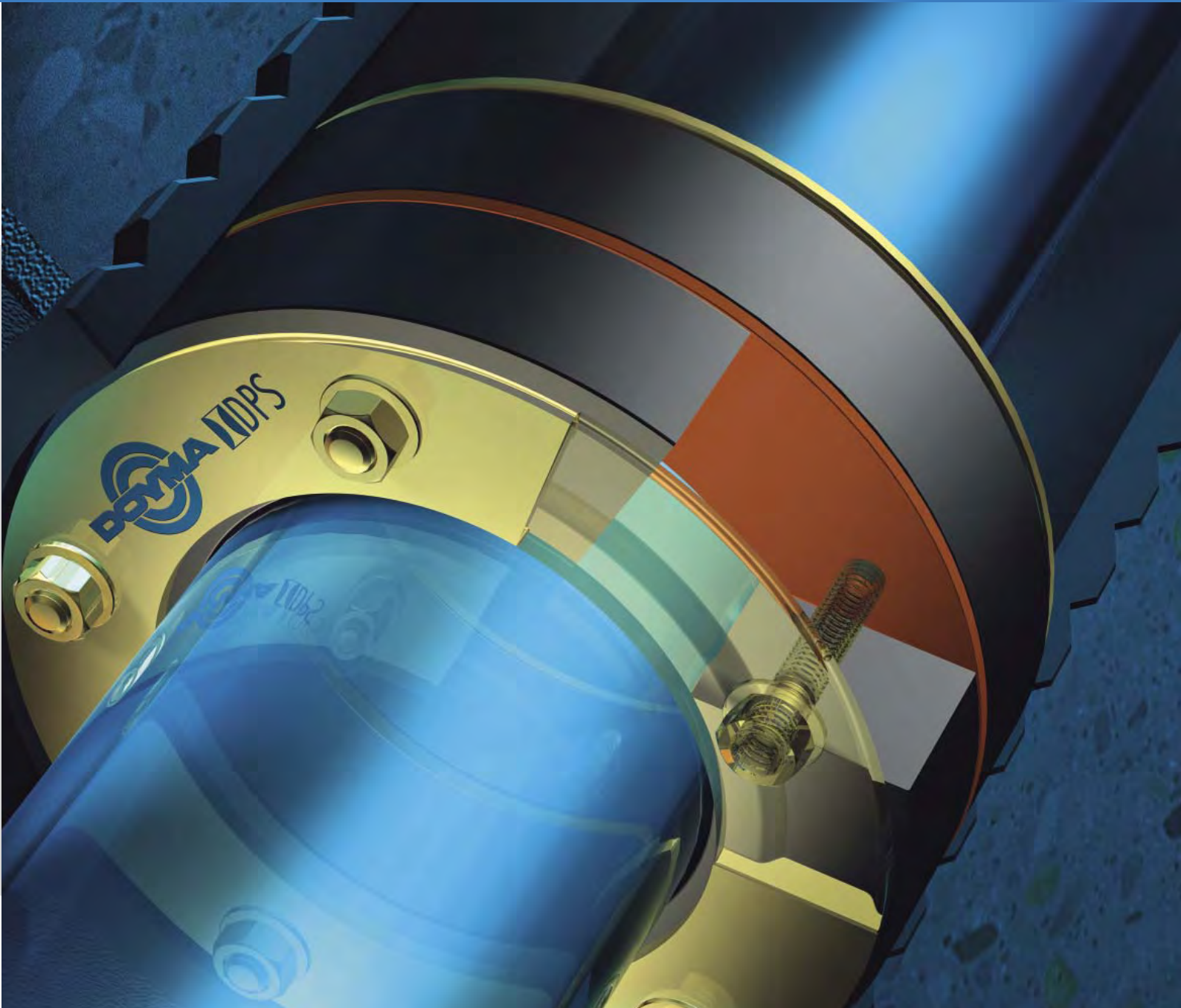


# Curaflex®

SEALING SYSTEM



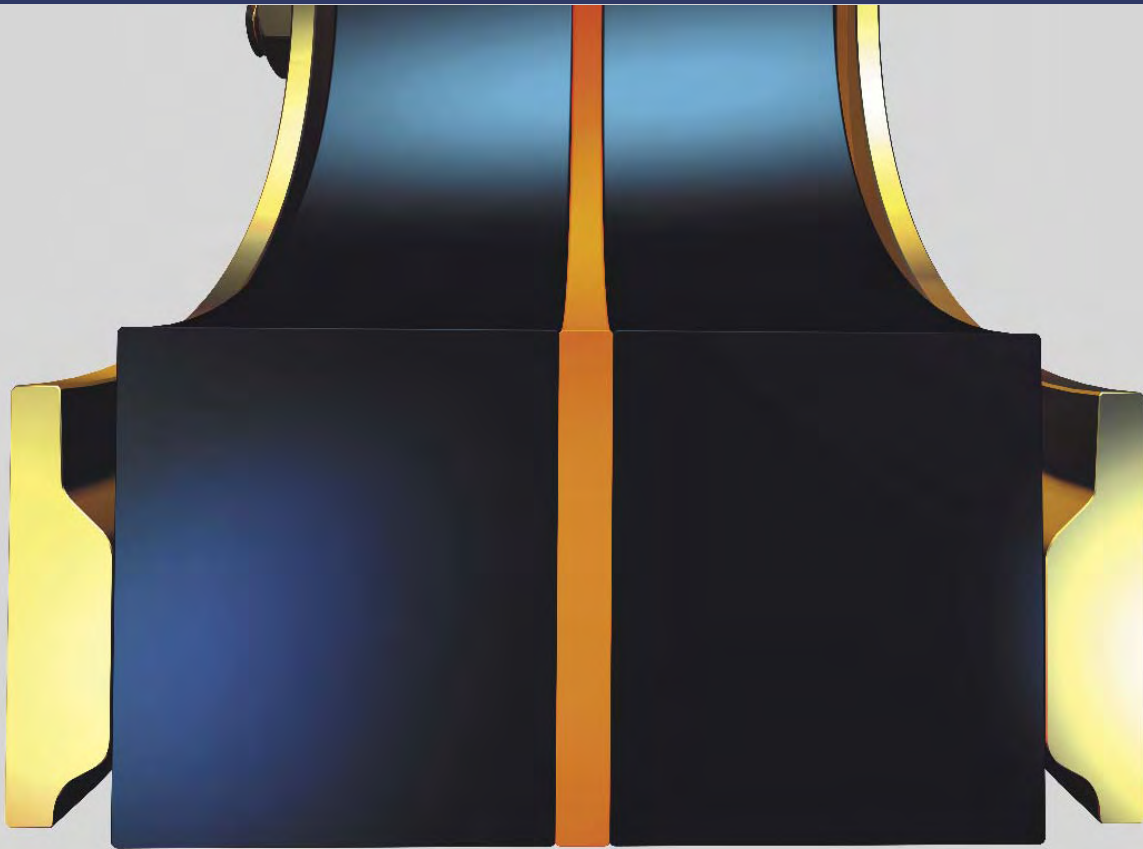
Profile delivers top performance





## Curaflex® with DPS

The essential feature of the new Doyma Curaflex®-System is the unique DPS "Double Profile System". The two-sided, internal asymmetrical profiling of the steel rings shapes the elastomer with considerably greater efficiency. No other system offers this.



### A strong system

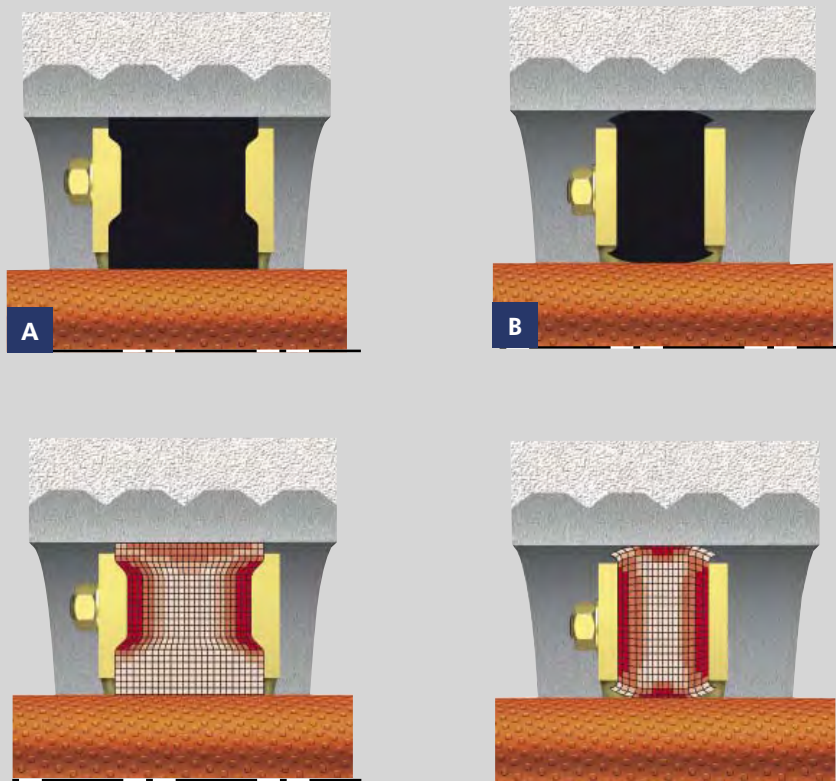
Only the optimum combined action of steel-ring profiling and the new type of special, thicker elastomers ensures that Doyma gasket inserts achieve significantly improved characteristics. The new Curaflex®-System with Doyma DPS is therefore more than just the sum of all its parts.

### Shorter installation times

Doyma DPS, with its new elastomeric compound, does not need to be re-torqued and, furthermore, the number of studs has been reduced. This means quicker installation and greater sealing efficiency right from the very start.

# Increased safety through larger contact surface

The Doyma DPS provides a much more even seal of the service duct. The width of the individual elastomer seals has also been increased from 20 to 27 mm. This combination increases the actual effective sealing area on the ducted service and core bore or pipe sleeve by almost 100%.



The Doyma DPS features a more intelligent method of pressure distribution. In comparison to conventional gasket inserts, the contact pressure is increased in the direction of the core bore or pipe sleeve. At the same time, the contact pressure on the ducted service is reduced by up to 30%. Delicate services are therefore protected against constriction.

## The Doyma DPS

reduces the curvature of the sealing faces and, therefore, increases the sealing surface by almost 100% (fig. A). This is an important safety factor, for example, in the case of walls with uneven core bores.

## Traditional gasket inserts

Provide a narrower contact surface due to the more pronounced curvature of the sealing surface in the installed condition (fig. B).

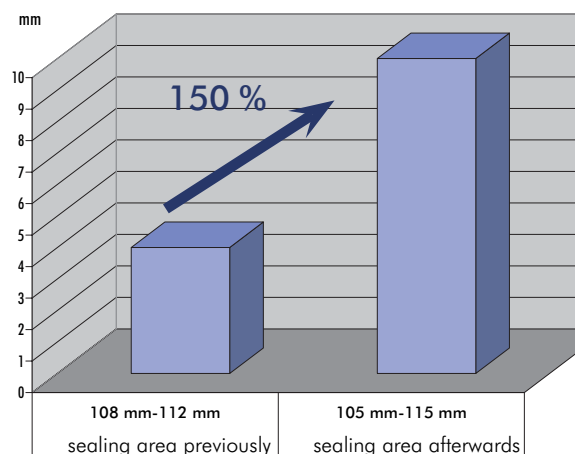
# Number of articles reduced by up to 67%

The new Curaflex®-System allows a larger range of service sizes to be sealed per gasket insert. This increased flexibility improves the frequency of stock turnover.

Pipe outer diameter/ cable diameter d [mm]	Pipe sleeve/ core bore [NB in mm]
1 - 40	80
41 - 57*	100
58 - 77	125
78 - 104	150
105 - 145*	200
146 - 190*	250
191 - 233*	300
234 - 288*	350
289 - 339	400
340 - 380	450
381 - 430	500

\* Please note: extended size range

An increased sealing area up to 150 per cent - Example 200 NB



## Unique flexibility

In the past, services between 105-141 mm could be sealed in 200 NB core bores or pipe sleeves. With the new Curaflex® - System featuring Doyma DPS, this dimensional range increases to 105-145 mm. In addition to this, the sealing area of the gasket insert has been extended: in the example of 200 NB, the number of different sealing gaskets required to cover the range is reduced from nine to four.

## Increased sealing area

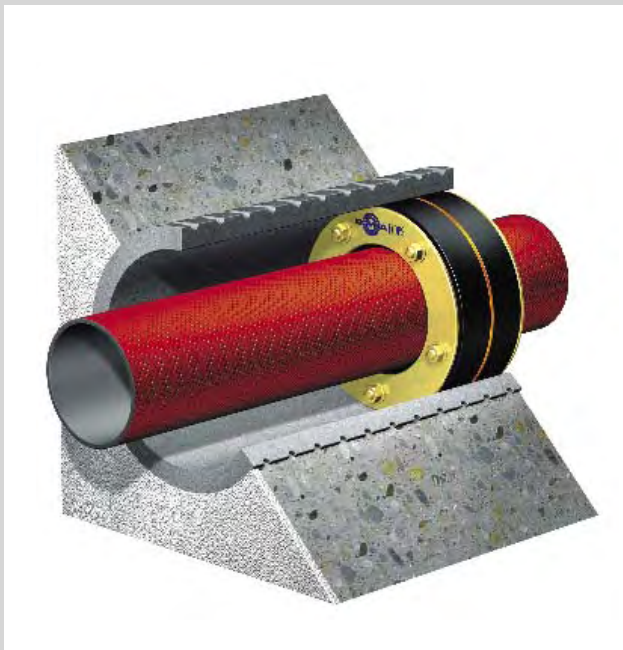
In the 200 NB duct size, there was a conventional rubber seal to cover the service size range 108 to 112 mm diameter. Curaflex® DPS has a rubber seal to cover the service range 105 to 115 mm diameter: An increase of 150%!

# A new system for achieving genuine maximum output

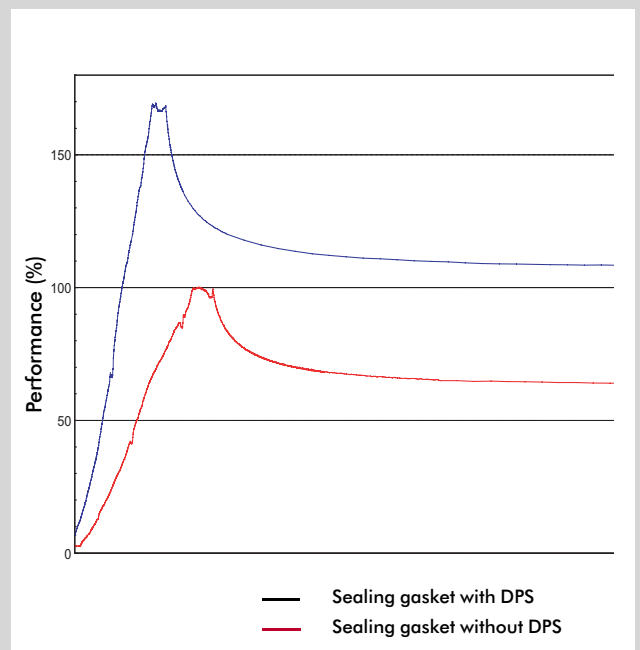
The combination of Doyma DPS, wider elastomer seals and the new "Doyma Grip" elastomer compound, specially developed for Doyma, increases the pressure seal by approx. 75%.

"Doyma Grip" is a highly non-slip and non-ageing elastomer compound. It prevents friction-reducing substances, e.g. mineral oils used as softeners, from allowing the gasket insert to slip.

Combination Curaflex® 3300



Performance is increased by 75%



## Flexible centre ring for even more contact surface

The double-sealing gasket insert is used for increased demands, e.g. in the case of pressing water.

The new elastomer centre ring reinforces the even force distribution of the "Doyma Grip" seal and therefore creates an even larger contact surface. Its orange colour makes it easy to identify.

## Immediate availability in new packaging

There`s much more to packaging than just transport protection. For this reason we are now supplying the gasket inserts featuring the Curaflex-System with Doyma DPS in attractive and practical individual packaging, featuring clear item identification, illustrated installation instructions and excellent stackability.

# Curaflex® gasket inserts with DPS

Curaflex® gasket inserts ensure flexible and water-tight ducting of pipes and cables through walls, ceilings and floors from outside into a building. Doyma gasket inserts are developed for the widest variety of applications. To find the right product, we distinguish between pressing water and non-pressing water.

## Curaflex® gasket inserts against pressing water



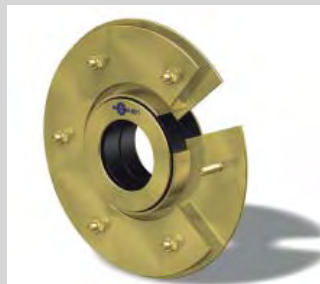
Gasket insert C



Gasket insert Quick In C

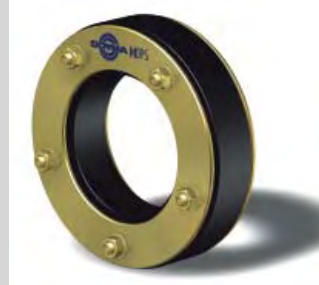


Gasket insert C/M



Gasket insert C/2/SD/6

## Curaflex® gasket inserts against non-pressing water



Gasket insert A



Gasket insert Quick In A



Gasket insert A/M



Gasket insert C/2/SD/5

## Technical information

- Curaflex® gasket inserts for pipes and cables
- for installation in pipe sleeves and core bores
- double sealing
- leak-proof against pressing / non-pressing water
- gas-tight
- angular deviation of service duct up to 8° accepted



DIN EN ISO 9001

**DOYMA GmbH & Co**  
Durchführungssysteme  
Industriestrasse 43-57  
28876 Oyten  
Germany

Fon: +49-(0)4207 9166 - 550  
Fax: +49-(0)4207 9166 - 599  
www.doyma.de  
export@doyma.de

